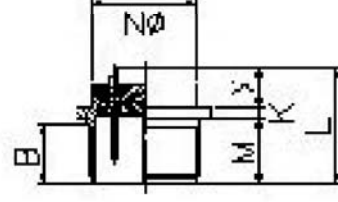
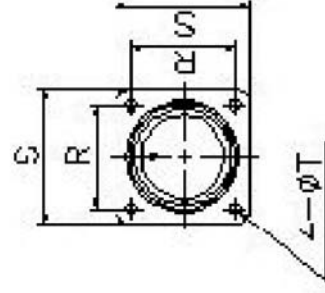


AMS3102A

SOCKET



PIN PLUG



SOCKET

PIN

Shell Size	Coupling Threads	Length of the effective portion of the thread over B	Thickness of the assembly rim under K	Length L	Length to Assembly rim	Cutter radius of the terminal	Position of the holes reserved for assembly	Length of the protruded sides	Hole diameter of the assembly holes:
					M+0.79 0	N + 0 - 4.78	R ±0.13	S ±0.79	T+0.25 -0.13
12S	3/4-20UNEF-2A	9.52	2.4	24.3	14.27	19.86	20.62	27.79	3.05
14S	7/8-20UNEF-2A	9.52	2.4	24.3	14.27	23.01	23.01	30.18	3.05
16S	1-20UNEF-2A	9.52	2.4	24.3	14.27	26.21	24.61	32.54	3.05
16	1-20UNEF-2A	15.88	2.4	29.1	19.05	26.21	24.61	32.54	3.05
18	1-1/8-18UNEF-2A	15.88	3.0	28.6	19.05	29.36	26.57	34.92	3.05
20	1-1/4-18UNEF-2A	15.88	3.0	29.4	19.05	32.56	29.56	38.10	3.05
22	1-3/8-18UNEF-2A	15.88	3.0	29.4	19.05	35.71	31.75	41.28	3.05
24	1-1/2-18UNEF-2A	15.88	3.0	33.4	20.62	38.91	34.52	44.45	3.73
28	1-3/4-18UNS-2A	15.88	3.0	33.4	20.62	45.26	39.67	50.80	3.73
32	2-18UNS-2A	15.88	4.3	33.4	22.22	51.26	44.45	57.15	4.39
36	2-1/4-16UN-2A	15.88	4.3	33.4	22.22	57.96	49.23	63.50	4.39
48	3-16UN-2A	15.88	4.3	34.2	22.22	77.90	66.68	82.55	4.39